



# The Heavy-Duty PVC-Tiles

« Traficline / Eurotile / Easytile / Standline »

ORIGINE  
FRANCE®  
GARANTIE

BVCert. 6014103



TLM  
SYSTEM



# An **ULTRA RESISTANT** and **ECOLOGIC** product

Located in France, since more than 30 years, TLM Systems is the PVC tiles and floor resins' specialist.

## The environmental approach of TLM :

For TLM Systems the respect of the environment is a priority :

- All our PVC tiles products are 100% recyclable 
- **We are engaged in collecting back our old PVC Tiles\***
- We invested in « **clean** » **production processes and products** to obtain one of the lowest VOC rate on the market, 20 times below the european standard \*\* 
- To go even further in our environmental approach, TLM developed a product made with more than 70% of recycled PVC : **EASYTILE**, & with 100% of recycled pvc : **EASYTILE PLUS** (see technical card out of brochure)

## Some datas :

- More than 10 millions m<sup>2</sup> installed all over the world
- Projects in more than 30 countries



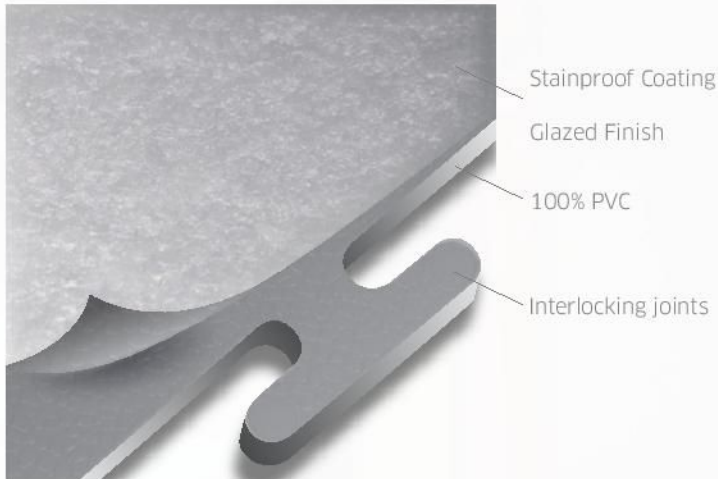
\* Except ESD tiles

\*\* See conditions in the website

\*\* This information has been measured on our product Traficline STG5 by the EUROFIN laboratory

## A UNIQUE TILE

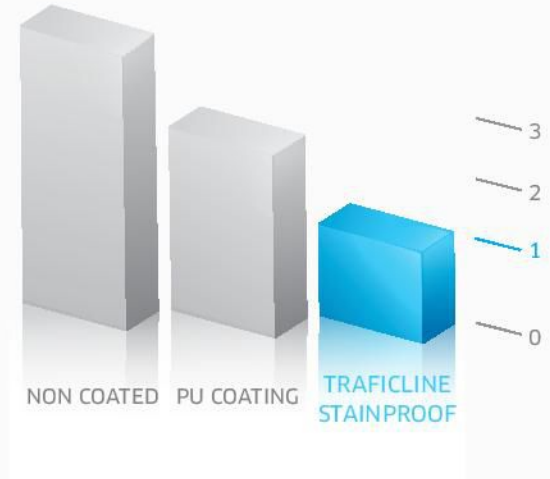
- **High chemical and mechanical resistance**  
According to the tests made by the french building institute (CSTB)
- **Fast and easy installation**



- **Eco-friendly**  
100% recyclable  
Very low VOC emission (54 µg/m³)\*

\*for STG5 tile

- **Easy maintenance**  
**Exclusive Stainproof coating** guaranteeing easy maintenance and durability
- > **Pedestrian Soiling Test**



« Change in appearance »  
(3) Very heavy soiling  
(2) Heavy soiling  
(1) **Low** soiling

Test carried out by Bauer Stuttgart (CSTB Test Report #RE03-071)  
Tiles were tested in accordance with standard NF EN 1471 (March 1997)

## Answering all your **NEEDS** and **APPLICATIONS**

### 1. PUBLIC PLACES & SERVICES



RETAIL FACILITIES



PUBLIC PLACES



GARAGES AND WORKSHOPS



SPORT FACILITIES



EVENTS

### 2. INDUSTRY



PRODUCTION FACILITIES



MAINTENANCE FACILITIES



STORAGE FACILITIES




COLD STORAGE FACILITIES



ANTI-STATIC WORK ENVIRONMENTS



# 6 good reasons to choose TRAFICLINE

- 1 • **From 5 to 14 mm of efficacy**  
Traficline has achieved an industrial performance standard (CSTB) on the 7mm tiles to fit all mechanical or chemical requirement of your environment.
- 2 • **Fast and easy installation**  
From now, floors maintenance and renovation do not need to stop the activity.
- 3 • **Stainproof :**  
Exclusive coating for an easier cleaning.
- 4 • **Insulating :**  
Protect from cold, insulate from noise et vibrations.
- 5 • **Ecologic:**  
All the Traficline products are 100% recyclable.   
VOC emission : 54 µg / m<sup>3</sup>\*
- 6 • **Large choice of decoration**  
More than 25 products available.



## Legend & Finishes



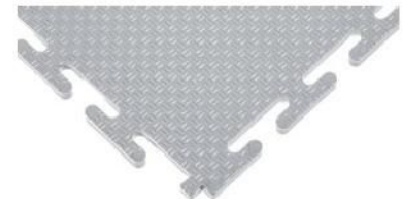
**Traficline STG5 & STG7 = fine-grained**  
Traficline STG 5/7 mm & Easytile Plus 5mm



**Traficline STA = large rice - grain pattern**  
Traficline STA 7 mm



**Traficline STS = small rice - grain pattern**  
Traficline STS 7 mm / Easytile & Easytile Plus 7 mm



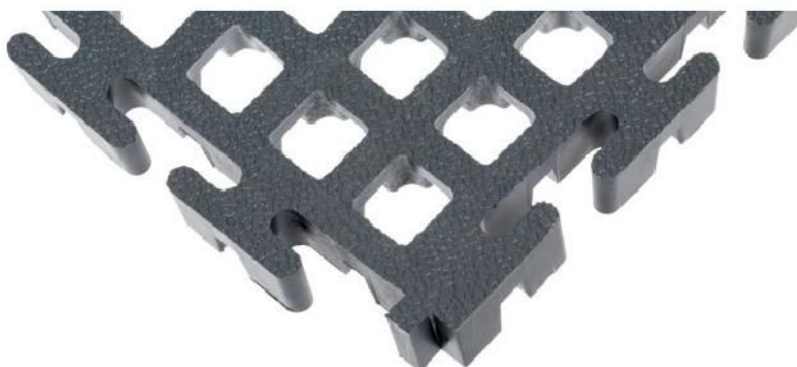
**Traficline STR = square pattern**  
Traficline STR 7 mm



**Eurotile = Soft Grip**  
Eurotile 8 mm



**Standline Duckboard = grain pattern**  
Suitable with Traficline® in 7mm + ramps



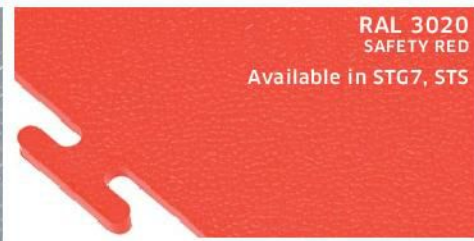


## TRAFICLINE INDUSTRY

Red, blue, green : delimit your different areas for always more safety.

Put some colors in your workspaces for a better organization

Other finishes made-to-order: ask us for lead time & minimum amount required

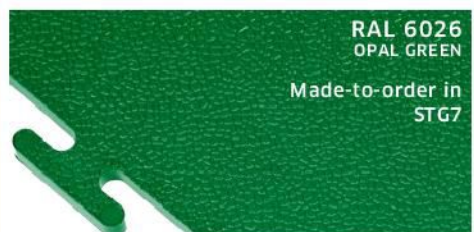
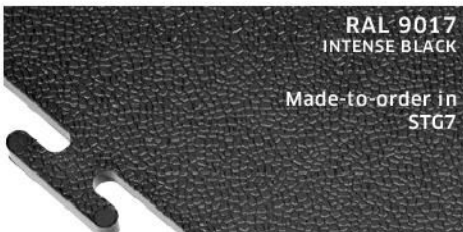


## TRAFICLINE COLORS

Chocolate, black or white:  
Mix and match to light up your environment!

Unleash your creativity with checkerboard, square and rectangle arrangements

Made-to-order. Please allow 3 to 6 weeks for delivery depending on chosen colour.  
(Minimum order: 150 m<sup>2</sup> for STG finish, 250 m<sup>2</sup> for the others).





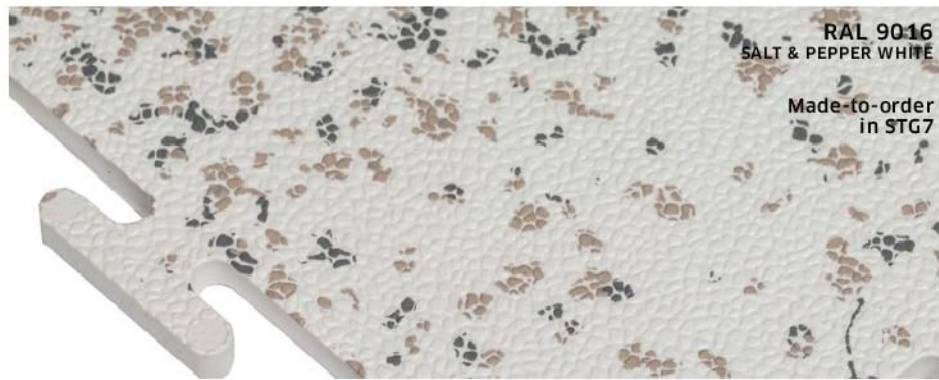


## TRAFICLINE DECOR

Want originality and colours ?  
Textile aspect with the extreme resistance of PVC tiles.

The « Decor » range will embellish your spaces.  
"Let your creativity express itself!"

Made-to-order: 4-8 weeks lead time. Minimum amount required = 250 sqm.



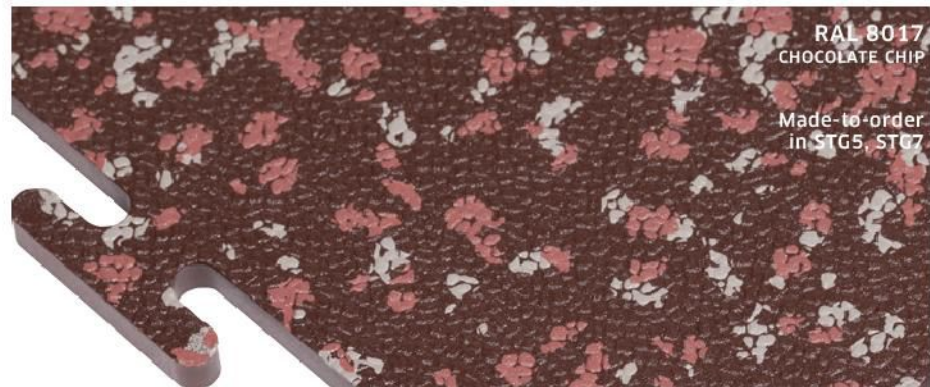
**RAL 9016**  
SALT & PEPPER WHITE

Made-to-order  
in STG7



**RAL 1019**  
CONTEMPORARY BEIGE

Made-to-order  
in STG7



**RAL 8017**  
CHOCOLATE CHIP

Made-to-order  
in STG5, STG7



**RAL 7901**  
ASH GREY

Made-to-order  
in STG5, STG7



**RAL 7016**  
COAL GREY

Made-to-order  
in STG5, STG7



**RAL 5009**  
BLUE LAGOON

Made-to-order  
in STG7



**RAL 3020**  
VOLCANO RED

Made-to-order  
in STG7



**RAL 6028**  
TAIGA GREEN

Made-to-order  
in STG7





## TRAFICLINE VISIOFLOOR: «PRINT YOUR FLOOR DURABLY !»

For your **events**, your **showroom**, travelling **exhibitions** ...

With Traficline Visiofloor®, your floor becomes a **real means of communication** .

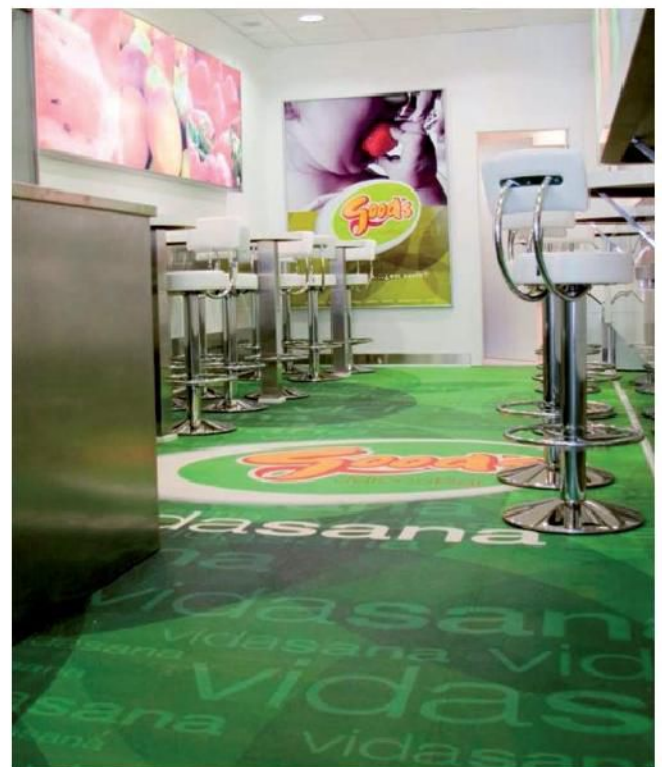
Choose your motif, indicate us the desired surface, we do the rest !

“Thanks to our unique Visiofloor® process, you can customise Traficline® tiles with your own pattern. Available in all sizes.”

- > Digitally customized tiles by UV drying inks
- > Registered patent
- > An original and eye-catching marketing tool
- > Identical reproduction of all logos or pictures without size limitation (quote on demand)
- > Exclusive Stainproof protection
- > No limited size



- > Individual pictograms available: zone delimitation, crowd control, warning messages.
- > In stock :  
Forklift, danger, arrow, pedestrian, do not enter and zebra pictograms.







## EUROTILE

*The tough pvc tiles with a smooth smart appearance !*

**Thickness 8 mm**

*Made-to-order: 4-8 weeks lead time.  
Minimum amount required = 250 sqm*

- **Easy and quick installation** : with a simple rubber mallet
- **The floor appears perfectly uniform**, without visible joints

**EUROTILE** offers the best compromise between **non slippery surface** and **ease of cleaning**  
Patented interlocking system for an **enhanced resistance**

- **Double row of fixing system** , parallel and continuous
- **No direct opening on the support**



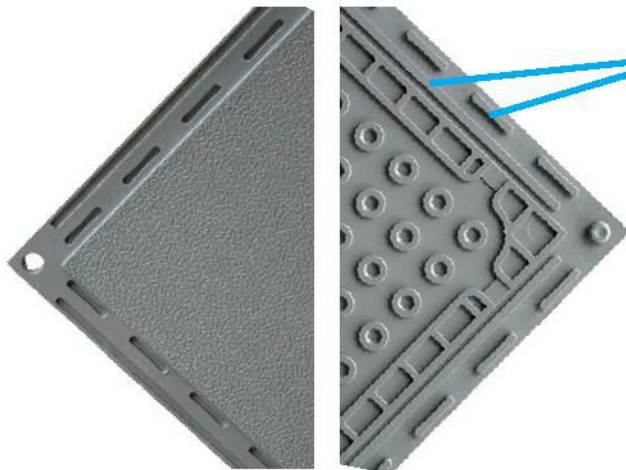




### 3 fixations for a rock solid tile !

#### On the front

Finely grained aspect,  
« SOFT GRIP » type,



New interlocking system, without the « T » joints, located in the bottom part of the tile and completely invisible once the material is laid.

#### On the back

### Colors range



\* Special care is required for light colors to avoid getting them dirty quickly, ask us for specific cleaning procedure





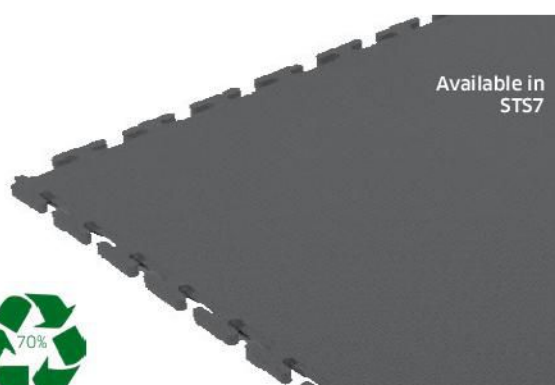
## EASYTILE : the “green” pvc tile for a long-lasting refurbishment at a great value

### EASYTILE (Matt)

**Ideal to refurbish Garages, Workshops.**

The fast & easy solution for areas with intensive walking traffic &/or light rolling traffic (cars)

**Made of 70% of recycled pvc.**



Available in  
STS7

### EASYTILE PLUS (Shiny)

**Tougher than Easytile, Easytile Plus will withstand extreme walking & rolling traffic**

**With exclusive Stainproof® coating**

Suitable for fork trucks, HGVs & heavy duty applications

**Made of 100% of recycled pvc**



Available in  
STG 5, STS7





## Areas of application: Which tiles match your needs?

Area	Activity	Areas of application	Easytile Plus 5mm	Traficline 5mm	Easytile 7mm	Eurotile 8 mm	Easytile Plus 7mm	Traficline 7mm
								
Stainproof coating			Yes	Yes	No	No	Yes	Yes
Colors and composition			100% recycled PVC 1 colors (noir)	100% virgin PVC 8 colors	70% recycled PVC 1 colors (black)	100% virgin PVC 6 colors	100% recycled PVC 1 colors (black)	100% virgin PVC 16 colors
Detached house		Light Pedestrian Traffic Living room						
		Light Rolling Traffic (Individual car) Garage, workshop, cellar						
Retail area/ Service Industries		Moderate Pedestrian Traffic (500 pedestrian/day) Small shops, hotels, small offices						
		Intensive Pedestrian Traffic (1000 pedestrian/day) Sports facilities, school classes, open-space offices						
		Heavy Rolling Traffic (car, van/no pallet truck) Garage, showroom, parking						
		Extreme Pedestrian Traffic and pallet truck (+ of 2000 pedestrian/day and pallet truck loaded with 2T) Train station, airports, malls, hypermarket						
	+ transpalettes							
Industrial area		Pallet truck (+800kg) Storage, maintenance						
		Pallet truck (+1500kg)						
		Forklift (+3000kg)						
		Forklift (+4500kg)						

This guide is a sales support, illustrating the possibilities of use of our products and can in no way be taken as a recommendation of the TLM company.

Other parameters such as: the condition of the substrate, the frequency and intensity of mechanical and chemical constraints, exposure to extreme temperatures (frost, sun) are not included in this guide.

They can strongly influence the choice of the product and the method of installation (with or without glue) and have to be the object of a detailed specification by a project owner.

The specifications into brackets are only for an illustrative purpose. They can in no way be considered as contractual. The TLM company cannot be held liable for bad recommendation or misuse of its products.

If in doubt, contact one of our authorized distributors or our customer service at 04.82.53.95.19 or via sales@tlm-systems.com.



# LES DALLES À LA FRANÇAISE

«THE FRENCH KNOW-HOW»

## TRAFICLINE TECHNICAL DATA

(technical data sheet for further tiles available on request)

Technical specifications	Standard	Unit	Traficline
Hardness	ISO 868	Shore A	91
Abrasion	NF EN 660-1	mm	0,10 1,5% of total thickness
Toughness - 1% elongation - 2% elongation	MI UEAtc	kg/m	836 1387,5
Elongation before break	NF T 46 002	%	126,8
Tensile strenght	NF T 46 002	tonne/m <sup>2</sup>	1376
Dimensional stability	NF EN 434	%	0,13
Bending to heat - initial - final	NF EN 434	mm	0,1 0,8
Indentation - under load - residual	NF EN 433	mm	0,19 0,07
Resistance to natural light through a window	NF EN 20105-B02	Scale of 1 to 5 (5 : highest resistance)	5 (no deterioration)
Chemical resistance - common acids, oils, diesel - solvents, common bases	NF EN 13529		No deterioration Does not resist prolonged exposure
U.V. stability			Good
Inflammability	EN 13501-1		Low flammability BFL-S1
Slipping test	EN 13893		0,75
	DIN 51130		R10
Coefficient of dynamic friction	EN 14041		DS Class
Classification	EN 685		Class 34-43
CSTB Puncture Test	CSTB 3562 Specification	Critical Stress Maximum Stress	P/M4.2.1.3 P/C3.3.3.2.3.0.0.3.3

### CONSIGNES D'UTILISATIONS :

- All special cases are subjected to a detailed product requirements document (PRD): exposure to extreme temperatures (frost, sun exposure, high room temperature); chemicals (acids, hydrocarbons, lubricants); extreme loads (in kg/cm<sup>2</sup>); gluing is required in all those cases.
- It is important to ensure that your surface is sturdy before attempting to install Traficline flooring.
- Compliance with this information guarantees your total satisfaction.

### OUR PARTNERS



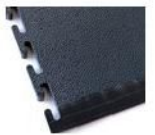
N°FR002494-1 tel : (33) 4 70 51 52 97 - fax : (33) 4 70 51 57 21 - mail : contact@groupe-tlm.com  
CS 43109 PREMILHAT - 03105 MONTLUCON CEDEX

ISO 9001 - 14021

For free product samples go to : [WWW.TLM-SYSTEMS.COM](http://WWW.TLM-SYSTEMS.COM)

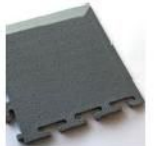
### Access ramp

Dimensions : 500 x 160 mm  
Thickness : 5/7 mm Traficline  
or 14 mm Standline  
Colors : Traficline and  
Standline colors



### Corner ramp

Dimensions : 160 x 160 mm  
Thickness : 5/7 mm Traficline  
or 14 mm Standline  
Colors : Traficline and  
Standline colors



### Zebra ramp

Dimensions : 500 x 160 mm  
Thickness : 7 mm Traficline STG  
Colors : Yellow or «Zebra»



### Périline

(Skirting for Traficline tiles):  
Unit : 3 ml  
Supplied with : 50 knock-in  
screw or in unit  
Colors : white, grey, yellow,  
orange and lavender



### Cleanline Detergent:

Foamless biodegradable  
alkaline cleaner.  
Dilution 2 to 15% in case of  
high dirtying.  
Application : spraying, manual  
brush, cloth, single brush floor  
machine, scrubber dryer.



### Superclean detergent for toughest soiling

Foamless biodegradable  
alkaline cleaner.  
Dilution 2 to 15% in case of  
high dirtying.  
Application : spraying, manual  
brush, cloth, single brush floor  
machine, scrubber dryer.



### PU Glue



100% recyclable